



Upham Park Road, London, W4 1PG

Guide Price £675,000

WHITMAN & CO.

SALES · LETTINGS · COMMERCIAL

- Three bedrooms
- Fantastic transport links
- Period features

- 964 square feet
- Central Chiswick location
- No onward chain

Tenure - Leasehold
Lease length - 949 years remaining
Ground rent - £25 pa
Service charge - £1,200 pa
Local authority - Hounslow
Council tax - Band E

Upham Park Road, W4

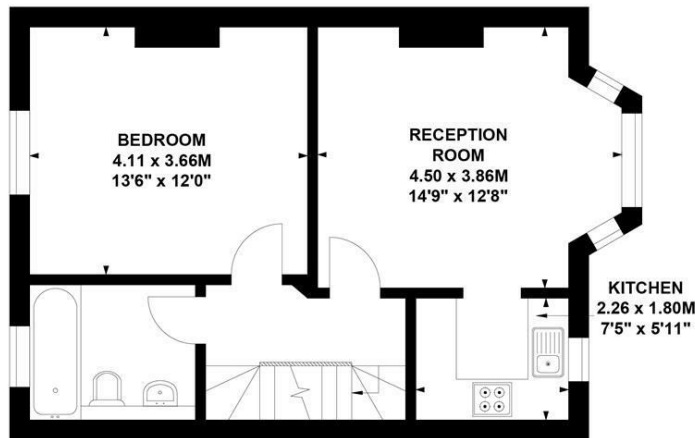
Approximate gross internal area

89.5 sq m / 964 sq ft

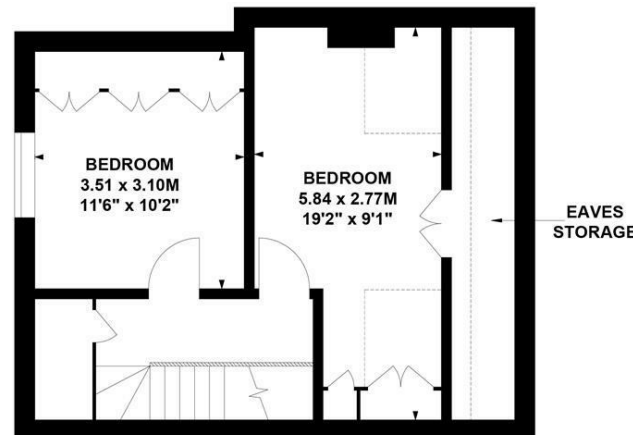
(Including Eaves Storage)

Eaves Storage : 9 sq m / 97 sq ft

Key :
CH - Ceiling Height



First Floor



Second Floor



Ground Floor

Not to scale, for guidance only and must not be relied upon as a statement of fact.

All measurements and areas are approximate only

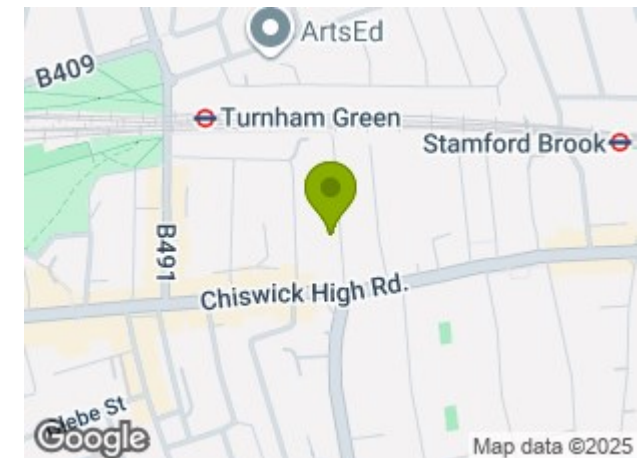
THE PROPERTY

A well-proportioned split-level three-bedroom maisonette ideally located on this sought-after residential street just north of Chiswick High Road.

This period property offers 964 sq ft of accommodation, comprising three bedrooms and a bright reception room, fitted kitchen and bathroom with further potential to update and personalise.

Upham Park Road is perfectly positioned for immediate access to the boutique shops, cafés, and restaurants of Chiswick High Road and Turnham Green Terrace. Turnham Green Tube Station is just a two-minute walk away. Offered with no onward chain.

SITUATION



5-7 Turnham Green Terrace, Chiswick, London, W4 1RG

Tel 020 8747 8800

E-mail sales@whitmanandco.com

Website www.whitmanandco.com